



Tennessee Valley Region

of

The Embroiderers' Guild of America, Inc.

Presents

Potluck Stitching

SHARE-A-STITCH 45

June 19 – 22, 2025

Whispering Woods Hotel and Conference Center
Olive Branch, Mississippi

POTLUCK STITCHING SEMINAR 2025

June 19-22, 2025

Class Descriptions

Snow and Sand

Instructor: Terri Bay

Technique: Whitework, Blackwork

Level: Basic Intermediate

Kit Fee: \$70 white

\$85 blue

Kit: 28-count Linen, embroidery floss, needles

Pre-Work: none

Student Provides: Small embroidery scissors, 10-12 inch hoop or Q-Snap™ or similar-sized stretcher bars or scroll frame. Lighting or magnification as needed by student, and normal stitching tools.

Snow and Sand is a blackwork and whitework bell pull offered in traditional black and white and also a color version featuring Cottage Garden Threads. This is a two day, basic/intermediate level class designed to teach the basics of reversible blackwork and to advance the first steps of whitework. The stitched area of the bell pull measures 3 inches wide and 11 inches high. Some of the stitches included are double running, satin, plait, and several types of eyelets. It is worked on 28 count linen with two sizes of pearl cotton and six strand floss. Bell pull hardware is not included.

Terri Bay is an embroidery teacher and designer from South Carolina. Her passions are Whitework and Blackwork, either separate or dancing a beautiful duet with each other. Terri has taught for many years at various shops, retreats, EGA chapters, and EGA seminars.



POTLUCK STITCHING SEMINAR 2025

June 19-22, 2025

Class Descriptions

Holly



Instructor: Dawn Donnelly

Technique: Canvas Work

Level: Intermediate

Kit Fee: \$152

Kit: 18-count canvas, pearl cotton, impressions, Metallic, Vineyard Silk, Watercolours, Silk Lame' Braid, Weeks Dye Works, Soy Luster, Beads, Copic marker, needles, (model palette or student's choice of color), needles

Pre-Work: none

Student Provides: Stretcher bars and tacks, frame, or hoop; embroidery scissors, (optional but recommended) lighting and magnification.

If you are looking for the perfect Christmas decoration for the holiday season with a bit of magic and luck, then look no further. "Holly" will be a great addition to your stitched wall décor. After coloring the leaves, the student will fill them with stitches, such as, Trellis, Criss Cross Hungarian, Woven, Medallion, Hesitation, Pavilion, Cashmere, Oriental, and Donahue. The berries are created with Rhodes Stitches and the stems are worked in wrapped Split Stitch. And, finally, a Fly Stitch for the sprigs of fir.

Dawn is a mixed-media artist who enjoys incorporating other forms of art within needlepoint. She holds a teacher certification in canvas with the National Academy of Needlearts (NAN) and teaches nationally and locally for NAN, ANG and EGA, and is the author of *Transformative Stitching: Needlework on the Diagonal*. Dawn been recognized for her excellence of work in numerous exhibits and several of her articles have been published in Needlepoint Now and Needlepointers. She spends her time volunteering as membership chair and registrar for NAN, treasurer for NETA and president for ANG's Magnificent Obsession Chapter. Dawn can be reached at threadupdd.com.

POTLUCK STITCHING SEMINAR 2025

June 19-22, 2025

Class Descriptions

Annette's Bouquet

Instructor: Deborah Mitek

Technique: Silk Ribbon Embroidery

Level: All Levels

Kit Fee: \$135

Kit: Handpainted, taped Sandstone Congress Cloth with colorwash and line drawing, Assortment of silk, cotton, and other threads chenille and tapestry needles (various sizes), instruction booklet including a large picture of the design, stitch guide, diagrams, detail photo, Tips on Handling Silk Ribbon

Pre-Work: none

Student Provides: 15" by 15" Stretcher bars, tacks or staples, trolley needle and/or wooden laying tool, light and magnifier if needed, , and normal stitching supplies



Stitch this charming bouquet of Spring flowers while learning the basics of silk ribbon embroidery and other surface stitching techniques. Dimension and texture are created by using a variety of silk ribbons and other threads in varying weights and thicknesses. The design uses both 4mm & 7mm silk ribbons, most overdyed, DMC pearl cottons, Needlepoint Inc. silk flosses, Silk Road Straw Silk, Trebizond silk pearl, Appleton crewel wool and Painter's Thread soie perlee on a 15" x 15" drawn & hand-painted congress cloth background. The outline stitch, stem stitch, wrapped stem stitch, detached chain stitch, straight stitch, split stitch, satin stitch, loop stitch, fly stitch, feather stitch, pistil stitch, French knots, colonial knots, the ribbon stitch and couching are used to complete the design.

Deborah is a needlework designer and teacher specializing in silk ribbon embroidery and surface stitching on both fabric and canvas. As a member of EAC, NAN, ANG & EGA for over 40 years, she teaches at the national, regional, and local levels. Her work has been featured in both Needle Arts and Needle Pointers magazines. Currently, she is the owner of Island Stitchery & Studio, a retail needlework shop. She can be reached at ineedlework@sbcglobal.net.

POTLUCK STITCHING SEMINAR 2025

June 19-22, 2025

Class Descriptions

Moon on the Water

Instructor: Wendy Moore

Technique: Counted Canvas Embroidery

Level: Advanced Intermediate

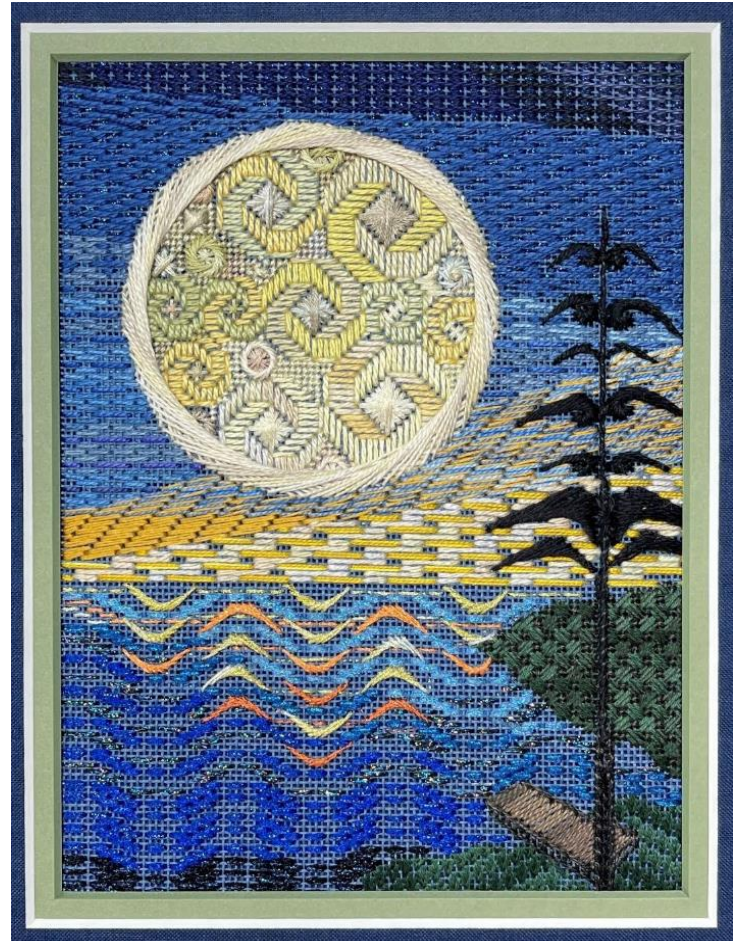
Kit Fee: \$135

Kit: : 18-count Antique Blue mono canvas – line drawn & taped, Pepper Pot & Vineyard silks, overdyed pearl cottons and floss, Silk Lame` Braid, instructions 3-hole punched, needles, thread drops, pictures

Pre-Work: none

Student Provides: 12” stretcher bars(2 pair), tacks or staples, frame or frame-weight, laying tool (mandatory), usual stitching supplies, light and magnification recommended. I also would recommend a light-colored towel or napkin to place under your stitching to help count the dark canvas

Find peace watching the water ripple the reflection of a large romantic moon. With the twinkling of the night sky, the moon’s reflection comes to life in small Crescent stitches and Silk Lame Braid. The moon’s craters take shape with the Bargello Twist in soft silks. Stitch the glow with long stitches on canvas the color of the night sky. A small spit of land, a dock, and finally the tree gives shadowed perspective to the design and uses unique versions of Crescent stitches to create the sparse foliage of the tree silhouette



Stitches used include smooth spider web, round Rhodes, 4 trip herringbone, brick, Parisian, Hungarian, scotch, byzantine, Milanese, detached button, couched lines, layered Jessicas.

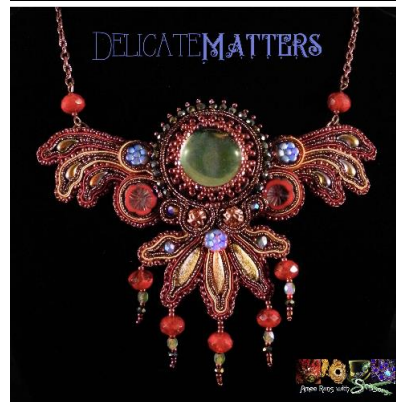
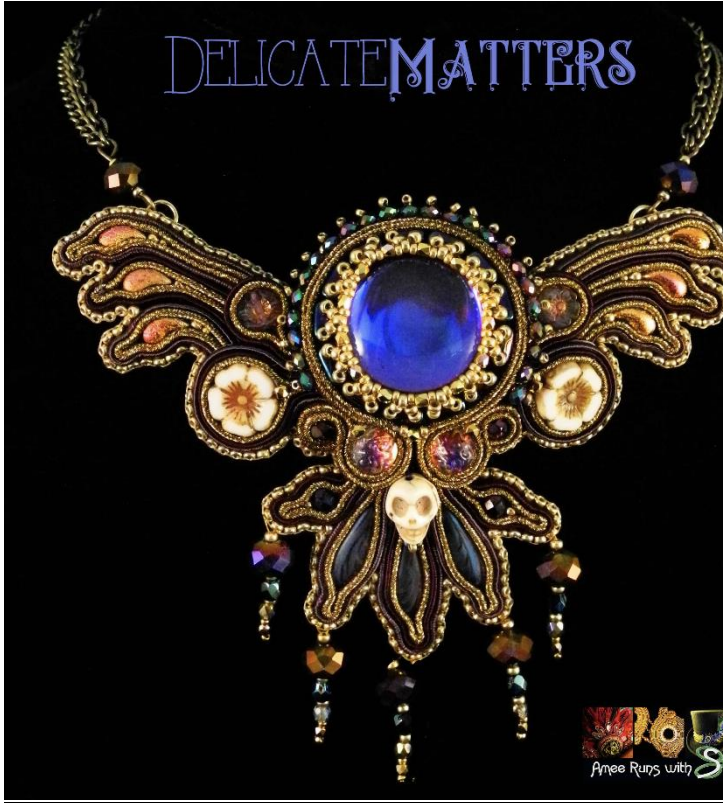
Wendy tries to bring both her MFA degree in Costume Design and fourteen years of teaching to her needlework design and teaching, with a great interest in color theory and computer work. Wendy is fascinated by mathematical and perceptual puzzles which come out in her designs. She teaches her designs locally and has received the National Academy of Needlearts' Teacher Certification in canvas embroidery. In addition to NAN & EGA, Wendy is also a member of ANG Great Lakes Stitchers Chapter and has held many offices for the Monguagon EGA chapter and Great Lakes Region EGA.

POTLUCK STITCHING SEMINAR 2025

June 19-22, 2025

Class Descriptions

Delicate Matters Beaded Necklace



Instructor: Amee K. Sweet-McNamara

Technique: Soutache and Bead Embroidery

Level: Basic Intermediate

Kit Fee: \$90

Kit: Soutache, beads, beading foundation, nymo thread, Ultrasuede, findings, needles, glue (kits are provided in a variety of colorways are selected on a first-come, first-served basis)

Pre-Work: none

Student Provides: Students should come to class with a bead-blanket or bead-tray, a good pair of small-to-medium-sized, sharp scissors and any eyeglasses, magnifiers or additional light source they generally use for close-up work. To complete the project, students will need flat-nose pliers, flush-cutters and round-nose or looping pliers although it is unlikely that these tools will be needed in class. Projects will not be finished in class but Amee Runs with Scissors famous “Whole-Story Instructions” will insure that the projects can be finished at home.

Jewelry – in comparison to – say clothing or furniture – is quite small. Consequently, tiny details are important as they can affect not only the overall look of a piece but its overall mood. The choices we make about small elements and line-qualities can determine whether a piece is seen as classic or edgy, sweet or mysterious. Adventurous Beginners will learn the basics of Soutache & Bead Embroidery while more advanced Stitchers will be excited by learning a new bezel-design and techniques for incorporating some of

POTLUCK STITCHING SEMINAR 2025

June 19-22, 2025

Class Descriptions

the newest beads on the market. All kits come with “choices” (skulls or daisies? disks or hibiscus?) and optional design decisions are offered throughout the project.

Ask Amee K. Sweet-McNamara why her fine-art jewelry business is called “Amee Runs with Scissors,” and she usually just laughs and says, “Because it sounds a whole lot sexier than ‘Amee Eats Paste.’” Working out of her New Hampshire home, Sweet-McNamara makes one-of-a-kind hats, accessories and pieces of wearable-art textile-jewelry using a variety of techniques including “Soutache & Bead Embroidery” which involves hand-stitching yards and yards of soutache braid and hundreds of tiny beads. She teaches internationally, writes about her craft and is a proud member of the League of NH Craftsmen.

Posy Band Sampler

Instructor: Catherine Theron

Technique: Counted Thread

Level: Advanced Intermediate

Kit Fee: \$130

Kit: 32-count linen, practice fabric, needles, silk flosses in shades of blue, green, gold, and red, tapestry needles, charts, instructions, color copies

Pre-Work: none

Student Provides: stretcher bars, normal stitching supplies

This 4” x 9” band sampler is worked on 32-count linen using silk flosses. Motifs in each band feature various stylized flowers & use a nice selection of counted sampler stitches including Smyrna Cross, Long-Arm Cross, Petit Point, Double Running, Spiral Trellis, Four-Sided, Diagonal Cross, Satin, Rice Stitch, Diagonal Queen, Queen, Chain Stitch, Montenegrin, & Satin Cushion. Dividing bands in various shades of gold are worked between the motifs introducing more counted stitches.

Catherine C. Theron is a graduate of Cornell University studying English, history, and design. She resides in Virginia. She is a self-taught designer and stitcher, and has concentrated on counted thread techniques and especially samplers for the past 30 years. Catherine has taught for EGA & ANG Chapters, EGA Regional Seminars, sampler guilds, shops, private groups, museums, & wholesale trade shows. She is also a former partner in the thread company The Gentle Art. Catherine loves to bring samplers to life with her combination of color & rich variety of stitches. She has never met a sampler she didn’t like!



POTLUCK STITCHING SEMINAR 2025

June 19-22, 2025

Class Descriptions

Studio Time

Instructor: Lois Threlkeld

Technique: All

Level: All

Need to finish that piece, but have forgotten how to do the technique? Can't find the diagram for that half-finished stitch? Don't want to add another UFO to the stack? Help is at hand! Join Lois in Studio Time and work on your own project, at your own pace, and receive help from the teacher. Lois will provide references and help in a variety of techniques.

Lois Threlkeld has taught classes at the region and chapter level, has authored petite projects and holds a Master Craftsman Certificate in canvas embroidery. She has experience teaching studio time at region seminars and classes in counted thread, hardanger, beading, teneriffe lace, needlepoint and canvaswork. Her work has won awards at Calloway School of Needle Arts and she is a juried member of Fiber Forum.